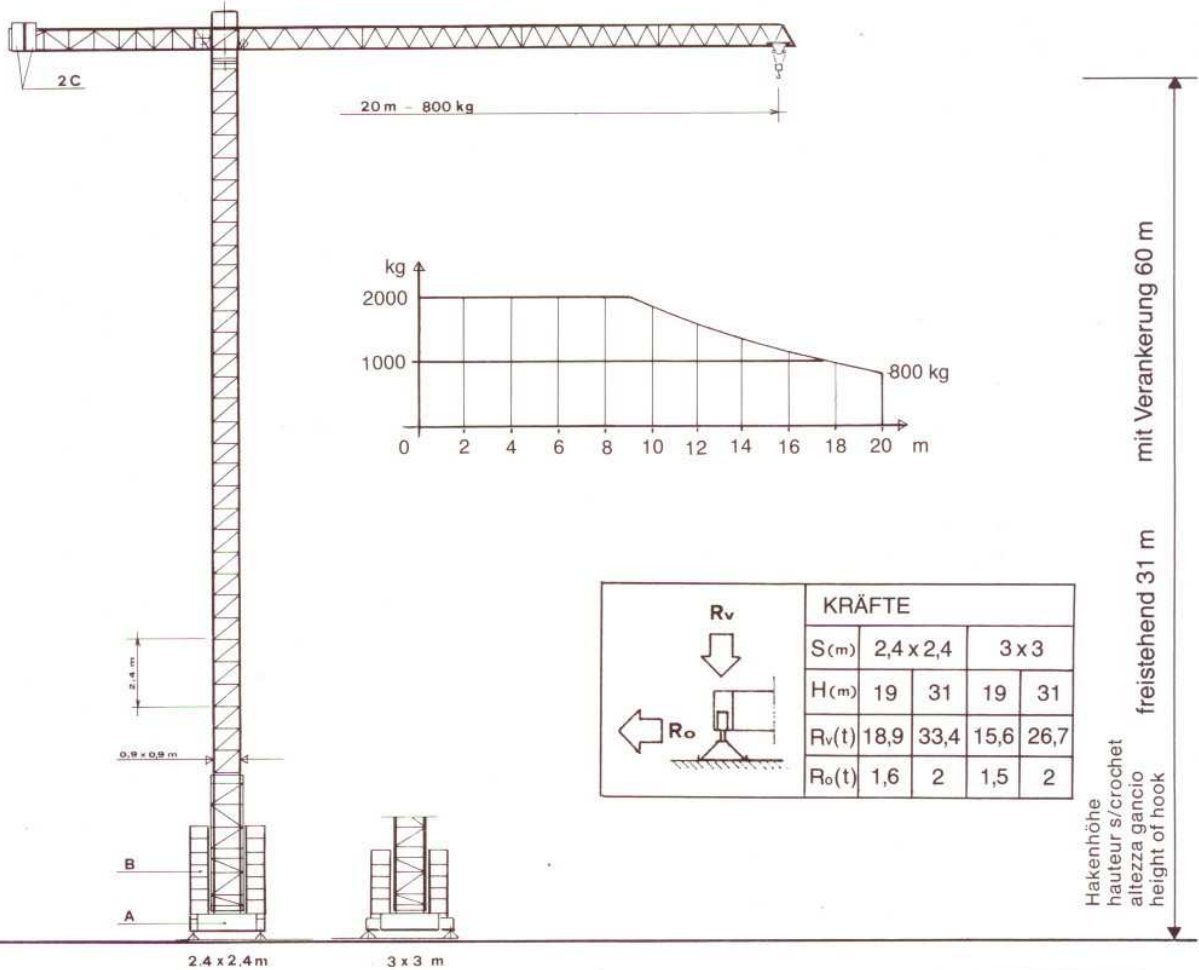
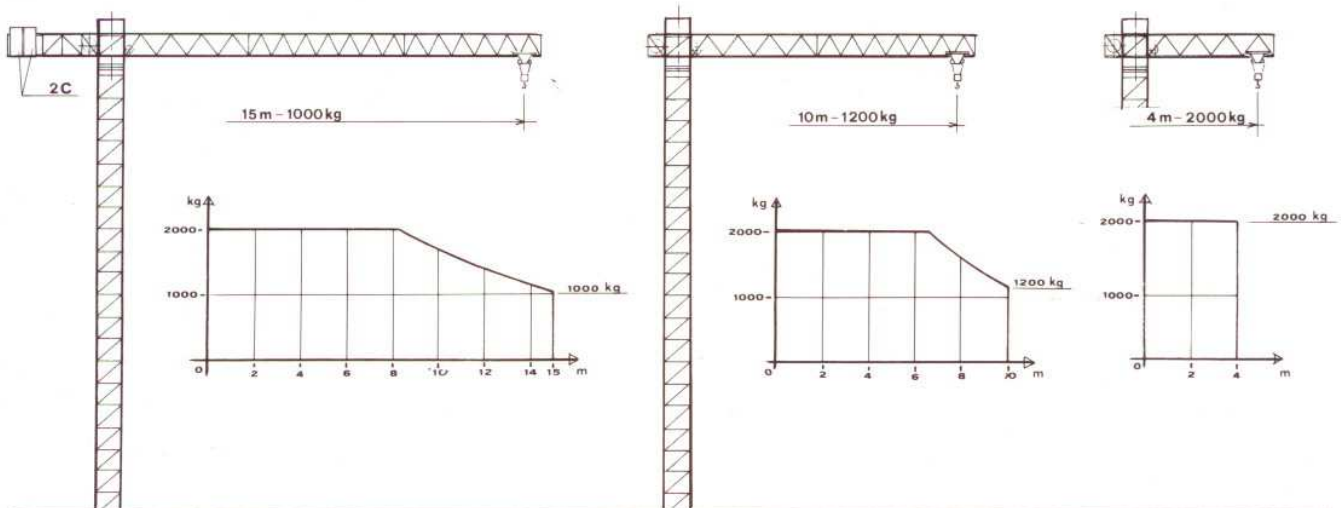


Conducta Umbau-/Stadtkran UK 15.10

Zul.-Nr. SUVA 3376



			36 m/min v = 18 m/min 4 m/min	1200 kg 2000 kg 2000 kg	GRUNDBALLAST					
					H (m)	TYP A		TYP B		A+B (kg)
	v = 30 m/min	Spurweite 2,4 x 2,4 m	19	4	1650	6600	8	2600	20800	27 400
			31	4	1650	6600	14	2600	36 400	43 000
	n = 0-1 U/min progressiv	Spurweite 3,0 x 3,0 m	19	4	1650	6600	6	2600	15 600	22200
			31	4	1650	6600	10	2600	26000	32600



Conducta

Fabrik für Baumaschinen
und Baugeräte

8409 Winterthur
Tel. 052/234 51 51
Fax 052/234 51 50

4616 Kappel/SO
Tel. 062/216 42 20
Fax 062/216 40 76

7302 Landquart
Tel. 081/322 53 33
Fax 081/322 01 33

3053 Münchenbuchsee
Tel. 031/869 39 39
Fax 031/869 39 13